

Supporting the Educational Needs of Adolescent and Young Adult Patients

February 26, 2021

DanceBlue Kentucky Children's Hospital Hem/Onc Clinic at the University of Kentucky



Adolescent and Young Adult (AYA) Population



Graduating High School or Earning a GED



Navigating the College and Trade School System



Understanding the Educational Rights



Possible Accommodations

- Allow STUDENT to have extended time (DOUBLE) when needed to complete assignments, projects, and assessments
- When possible, accept verbal responses or provide a scribe for assessments.
- Provide STUDENT with a voice recorder, SMARTpen, or other similar assistive technology to assist with note taking in class.
- When possible, please provide STUDENT with guided notes or PowerPoint presentation slides prior to the lecture or a copy of notes after presentation.
- Allow STUDENT to take breaks as needed to stand or walk in rear of classroom
- Provide STUDENT with a reader or an audio version of textbooks, assignments, and assessments
- Provide student with handicap accessible parking to limit the physical distance the student will have to walk to get to class
- Provide student with a quiet environment for assessments

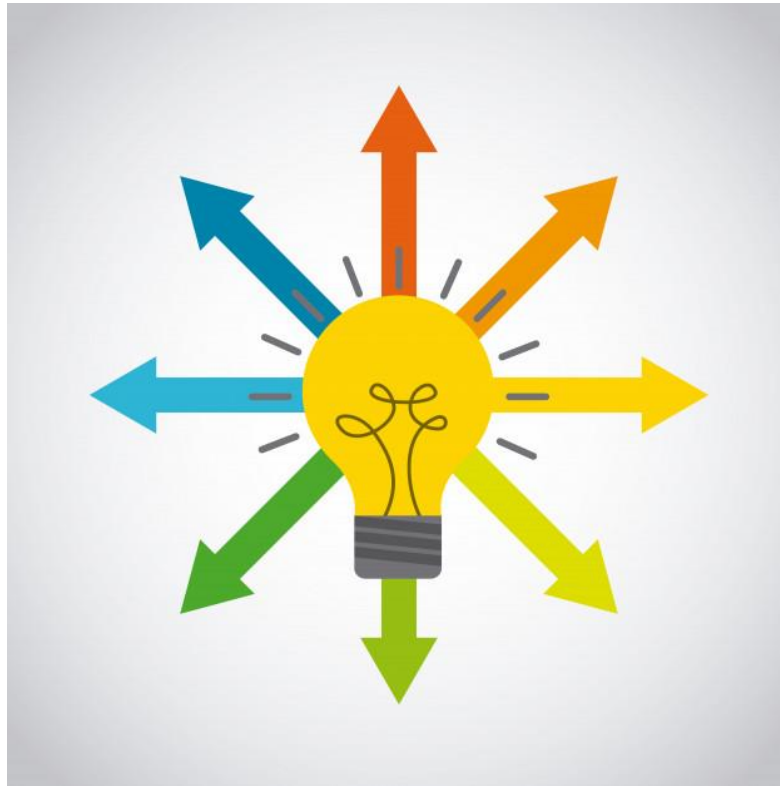
Alleviating the Financial Burden



Empowering AYA Patients



Final Thoughts



Thank you for your time!



Courtney N. Emery, M.Ed, NBCT
School Intervention Specialist
DanceBlue Kentucky Children's Hospital
Hematology Oncology Clinic
The PAWS Program
Office: 859-218-3442 | Fax: 859-323-5971
Email: courtney.emery@uky.edu