

THE CHALLENGE OF CHANGE

Embracing the Future



A special thank you to our sponsors!

Sponsors

Gold Level



Bronze Level



Agenda

April 27 April 28 April 29 On-Demand Sessions Poster Sessions

🕒
April 27, 2022 11:00
am

Keynote Speaker: Inspiring Empathy, Action Civics and Cross-Cultural Understanding in the Hospital Classroom



Akash Patel

🕒
April 27, 2022 12:45
pm

Breakout 1: Lecture:



Rebeca Grysko, PhD, CBIS
Nemours Children's Hospital, Florida

PedsAcademy®: A Hospital and University Partnership that Prepares Future Teachers to Meet the Needs of Students with Chronic Health Conditions

This session will describe PedsAcademy®, a hospital school program and collaborative partnership between a children's hospital and a large urban university. PedsAcademy® is the nation's first hospital school program to offer a formal internship for future teachers based on the nine required essentials of a professional development school (NAPDS, 2021). This unique internship provides future teachers with deep insight and gained understanding into the educational and social-emotional needs of children coping with chronic illness. The presenters will provide an overview of the PedsAcademy® program, including its impact for patients, families, and future teachers.



🕒
April 27, 2022 12:45
pm

Breakout 2: Roundtable:



Patty Dillhoff, MAT
Cincinnati Children's Hospital

Orientation for New Members

For those who are new to HEAL, this roundtable session will introduce participants to the history, mission, and vision of this multidisciplinary professional organization. HEAL President, Patty Dillhoff will moderate this session, welcome new members, and answer questions during this interactive session.

🕒
April 27, 2022 02:00
pm

Breakout 3: Lecture:



Jodi Krause, MA, CBIS
Children's Hospital Colorado

If You've Seen One Brain Injury You've Seen One Brain Injury: Understanding School Supports Across the Continuum of Brain Injury from Concussion to Severe

The presentation includes education on brain injury classification, symptom presentation from physical, cognitive and behavioral perspectives, and explores the different supports for instruction and reintegration into classrooms in both the short and long terms.

🕒
April 27, 2022 02:00
pm

Breakout 4: Panel Discussion:



Courtney Emery, MEd, NBCT
DanceBlue Kentucky Children's Hospital



Michelle Harvey
Children's Medical Center Dallas



Joni Hildreth, MA
Levine Children's Hospital



Moderated by: Kelly Ihejiawu
Children's Medical Center Dallas

Covid-19: Past, Present, and Future

From Pandemic, moving to Endemic; Members of the HEAL board will discuss how they have shifted to ensure that patients and students had the best educational experience during COVID. The Panel will also answer questions about how they continue to shift as COVID guidelines change.

🕒
April 27, 2022 03:45
pm

Breakout 5: Lecture:



Amy Fitzgerald, MAT
Rush University Medical Center



Rosario Cosme, M.D.
Rush University Medical Center

The Connection Between School Related Depression/Anxiety, and Children/Adolescents with A Learning Disability in Reading

The authors in a pediatric psychiatric inpatient unit noticed a pattern with children who were bright but struggled in school. They described how they had anxiety regarding school, low self-esteem, and school refusal. After doing research discovered that many school districts are not using best practices to teach reading. Children with a learning disability in reading often fail to graduate high school, had some involvement with the law, and had a lower percentage of employment than their peers. The authors wanted to know how to stop this pattern.

🕒
April 27, 2022 03:45
pm

Breakout 6: Roundtable:



Fatoumata Togola
Association Malienne de Lutte contre la Drépanocytose

School abandon by sickle cell disease children due to repetitive absence (limited capacity)

In my country more than 50% of sickle cell disease children abandon studies very early. Their sick conditions cause repetitive absence causing low level specialty for those who haven't anyone to help them understand all the lessons they miss. They spend a large part of their time at hospitals, either for crisis or for regular control. They suffer from misunderstanding either with their own community : parents, relatives, comrades; or their school administrations and teachers.

🕒
April 27, 2022 5:00pm-
9:00pm

Happy Hour/Networking

Happy Hour Breakout Rooms will include Networking, Guided Meditation and Relaxation, Psych/Mental/Behavioral Health, Oncology, Brain Injury, and more

Agenda

April 27

April 28

April 29

On-Demand Sessions

Poster Sessions



April 28, 2022 11:00 am

Keynote Speaker: Charting a Path Toward Educational Equity



Kate Dickinson-Villaseñor

overcoming the legacy of racial inequity in education and healthcare



April 28, 2022 12:45 pm

Breakout 7: Lecture:



Jennifer Harris, MSE

Sie Center for Down Syndrome,
Children's Hospital Colorado

Increasing Comprehension and Compliance of Learning Targets for Patients with Down Syndrome

It is no surprise or mystery that individuals with Down syndrome are capable of a great many things. What can be a mystery is how to engage, empower, and educate them during a medical visit or hospital stay. In this engaging lecture participants will learn how an individual with Down syndrome learns best so that they are able to become active agents in their care.



April 28, 2022 12:45 pm

Breakout 8: Panel Discussion:



Patty Dillhoff, MAT

Cincinnati Children's Hospital



Jenny Lindwall, PhD

University of Colorado/Children's
Hospital Colorado



Benjamin White

Multnomah Education Service District



Moderated by: Kelly Ihejiawu

Children's Medical Center Dallas

Our DEI Journey

The HEAL Board has been working behind the scenes to educate ourselves on our responsibility as a board and organization to promote equality for our members and the patients that we serve. HEAL has a unique opportunity to impact racial bias in the education and healthcare systems. The panel will discuss the work we have done individually and as a board. We would also like to use this opportunity to hear from our membership on moving the work forward for our students and members.



April 28, 2022 02:00 pm

Breakout 9: Lecture:



Sharon Wozny, BS, MEd

Children's Cancer Network

H.O.P.E. Honoring Our Peers Everyday

Honoring Our Peers Every Day, or H.O.P.E. teaches everyone who is part of your village's support system... school community, family, sports teams, troops, dance teams, church groups, friends, what this cancer journey entails for your family. Using the 3 components of Education, teaching the facts about childhood cancer, Compassion, learning about what it is like to return to the things you did before cancer, and a Call to Action, how to become a H.O.P.E. Ambassador and make a difference for the cancer fighter and the family, H.O.P.E. gives a glimpse into the realities of the cancer journey where you find yourself embracing a new normal.



April 28, 2022 02:00 pm

Breakout 10: Roundtable:



Julia DeAngelo, MPH

Children's National Hospital



Mason Hines

Mediator in RESOLVE's Washington,
D.C.



Meaghan Ervin Tishler

Children's National

Introducing a School-Friendly Health System Framework to Support Children's Health and Learning (limited capacity)

A school-friendly health system (SFHS) means that hospitals and health systems have made a commitment to actively help children reach optimal health and achieve their full academic potential. In this roundtable, the presenters will describe the SFHS principles, share initial learnings from the pilot launch an initial cohort of hospitals and primary care centers and engage with attendees on strategies to improve the delivery of health services and relationships with the education sector.



April 28, 2022 03:15 pm

Breakout 11: Lecture:



Kendra Homan, PhD

Cincinnati Children's Hospital



Debbie South, MEd

Cincinnati Children's Hospital

Understanding Chronic Pain: A Guide for Working with Schools

The impact of pediatric chronic pain on academic functioning is severe, pervasive, and negatively affects academic achievement, attendance, and social functioning. Research indicates that school personnel report feeling inadequately prepared to work with students with chronic pain. The purpose of the presentation is to provide a brief overview of the complex nature of chronic pain and to describe ways in which school liaison specialists and hospital teachers can best support schools in working with students with chronic pain.



April 28, 2022 03:15 pm

Breakout 12: Roundtable:



Ashley Smith, BA

MD Anderson CCH

College and Career Conference: A Collaborative Symposium for Teen and Young Adult Oncology Patients

The Pediatric, Adolescent, and Young Adult (AYA) College and Career Fair began in 2019 as a symposium to connect patients and families to educational, vocational, and psychosocial support they need to tackle the unique challenges of transitioning from active oncology treatment to survivorship. Today, the program has evolved into a multi-day Conference with virtual opportunities for AYAs to engage in optimal opportunities for academic and occupational success. In this session, participants will observe the goals of the program, witness its evolution over the years, and hear about the vision for the future.



April 28, 2022 04:30 pm

HEAL Association Business Meeting



April 28, 2022 6:00pm-9:00pm

Networking/Happy Hour

Happy Hour Breakout Rooms will include Regional Networking, Guided Meditation and Relaxation, and more



Agenda

April 27

April 28

April 29

On-Demand Sessions

Poster Sessions



April 29, 2022 11:00
am

Keynote Speaker: What's Here Now?: Mindfulness in Everyday Life.



Caverly Morgan



April 29, 2022 12:45
pm

Breakout 17: Lecture:



Karen Mixon-Martin, MS
University of California, San Francisco



**Gina Dragomanovich, MA,
CCLS**
San Francisco Unified School District

Taking Time to Reflect: A Conversation About Clinical Supervision and Self-Care for Hospital Educators

Our department has begun holding monthly interdisciplinary clinical supervision groups called reflective practice. This session will explore how our institution is creating a space for hospital educators to practice self-care and reflection by sharing the objectives and details of reflective practice and providing a space for attendees to share their practices with each other.



April 29, 2022 12:45
pm

Breakout 18: Panel Discussion:



Nicole Martinez
Guidance Counselor, Florida



Susan Fail
Principal, North Carolina



Courtney Emery
School Liaison, Kentucky



David Tate
School Nurse, California



Caroline Kornhauser

Challenges, Tips and Advice: Transitioning Your Student Back to School During or After a Cancer Diagnosis: A Panel Discussion (sponsored by: LLS)

Participate in this informative panel discussion of school personnel for practical tips on supporting a student attending school during or after cancer treatment. Panelists will share their experiences, offer practical information on communicating with the student with cancer, their classroom peers and school staff, address issues that may arise, and provide examples for how to deal with those challenges. A live Q&A session will be included.



April 29, 2022 02:00
pm

Breakout 19: Lecture:



Elaissa Hardy, PhD
Emory University/Georgia Tech

The Importance of College Volunteers in Children's Hospitals as Near-Peer Mentors to Pediatric Patients

Our research focuses on exploring the first-hand impact and importance of College Student Volunteers (CSVs) as near-peer mentors to pediatric patients. Our program has witnessed the first-hand impact, numerous positive outcomes, and social value created when CSVs are provided sufficient time of cultivate near-peer mentorship and meaningful interactions with pediatric patients. Our presentation will include perspective data from both the pediatric patients and the CSVs, outlining the positive benefits.



April 29, 2022 02:00
pm

Breakout 20: Roundtable:



Suzanne Seungyeon Lee



Anthony Villaseñor

Critical Practices for Inclusive Family Engagement

This session will focus on practical tools, strategies, and thinking routines to support inclusive family engagement.

- What are ways in which hospitals and school systems disenfranchise or fail to engage families of color and other minoritized identities?
- What does inclusive anti-bias and anti-racist family engagement look like on action?



April 29, 2022 03:15
pm

Closing Session: Gratitude as a Practice



Caverly Morgan
Topic: Self-care



April 29, 2022 04:15
pm

Conference Wrap-Up



Agenda

April 27

April 28

April 29

On-Demand Sessions

Poster Sessions



Productivity: Guide to Building an Individualize Productivity Tool



Deanna Morgan, MS
Children's Health

School Services is a non-revenue generating department. As a non-revenue generating department it is critical for School Services to account for the time they spend with patients and the patient populations they work with. A productivity tool is necessary for School Services to show the time we spend on the work we do. An accurate productivity tool allows us to see areas we are utilized in and make staffing decisions.



College and Career Conference: A Collaborative Symposium for Teen and Young Adult Oncology Patients



Ashley Smith, BA
MD Anderson CCH

The Pediatric, Adolescent, and Young Adult (AYA) College and Career Fair began in 2019 as a symposium to connect patients and families to educational, vocational, and psychosocial support they need to tackle the unique challenges of transitioning from active oncology treatment to survivorship. Today, the program has evolved into a multi-day Conference with virtual opportunities for AYAs to engage in optimal opportunities for academic and occupational success. In this session, participants will observe the goals of the program, witness its evolution over the years, and hear about the vision for the future.

Agenda

April 27

April 28

April 29

On-Demand Sessions

Poster Sessions



The Good, The Bad & The Ugly: Special Education Services for Children with Hematological and Oncological Conditions in the era of the COVID-19 Pandemic



Katie DiCola, MS
Columbia University Medical Center



Dara Steinberg, PhD
Columbia University Medical Center

This poster presentation will include an overview of changes to special education services following the COVID-19 pandemic. Specifically, this presentation will focus on the impact of these changes on children with hematological/oncological medical conditions. Findings from a retrospective chart review of children referred to educational liaison services within an oncology, hematology, and stem cell transplant division at an urban hospital will be discussed. Participants will be able to help identify potential solutions to educational challenges.



Addressing School-Related Inequities for Individuals Living with Sickle Cell Disease During the COVID-19 Pandemic and Beyond



Kaitlin Murtagh, MEd
Children's Hospital of Philadelphia, New
Jersey Section of Hematology/Oncology,
Voorhees Specialty Care Network
Center

Students living with sickle cell disease (SCD) are disproportionately affected by inequities in education caused by direct and indirect disease-related factors. Coupled with school-related challenges caused by the COVID-19 pandemic, the psychosocial team supported students and their caregivers across the tri-state by establishing a system and process of providing proactive programming, documentation, communication, and advocacy aimed at building and supporting the academic and social competencies of students living with SCD.



Teacher Talk: Closing the Gap on Teacher Preparedness to Educate Students with Chronic Illness or Mental Health Needs



Kelly Ihejiawu, MA
Children's Medical Center Dallas



Introducing a School-Friendly Health System Framework to Support Children's Health and Learning



Julia DeAngelo, MPH
Children's Medical Center Dallas



Mason Hines
Mediator in RESOLVE's Washington,
D.C.



Meaghan Ervin Tishler
Children's National

Keynote Speakers

Day One 11:00 AM - 12:30 PM EST



Akash Patel
Keynote Address

Day Two – 11:00 AM - 12:30 PM EST



Kate Dickinson-Villaseñor
Keynote Address

Day Three - 11:00 AM - 12:30 PM EST



Caverly Morgan
Keynote Address

Speakers



Amy Fitzgerald, MAT
Rush University Medical Center



Ashley Smith, BA
MD Anderson CCH



Benjamin White
Multnomah Education Service District



**Courtney Emery, MEd,
NBCT**
DanceBlue Kentucky Children's Hospital



Dara Steinberg, Ph.D.
Columbia University Medical Center



Deanna Morgan, M.S
Children's Health



Debra South, MEd
Cincinnati Children's Hospital



David Tate
School Nurse, California



Elaissa Hardy, PhD
Emory University/Georgia Tech



Fatoumata TOGOLA
Association Malienne de Lutte contre la
Drépanocytose



**Gina Dragomanovich, MA,
CCLS**
San Francisco Unified School District



Jennifer Harris, MSE
Sie Center for Down Syndrome, Children's
Hospital Colorado



Jenny Lindwall, PhD
University of Colorado/Children's Hospital
Colorado



Jodi Krause, MA, CBIS
Children's Hospital Colorado



Julia DeAngelo, MPH
Children's National Hospital



Joni Hildreth, MA
Levine Children's Hospital

Colorado



Kaitlin Murtagh, MEd

Children's Hospital of Philadelphia, New
Jersey Section of Hematology/Oncology,
Voorhees Specialty Care Network Center



Katie DiCola, MS

Columbia University Medical Center



Karen Mixon-Martin, MS

University of California, San Francisco



Kendra Homan, PhD

Cincinnati Children's Hospital



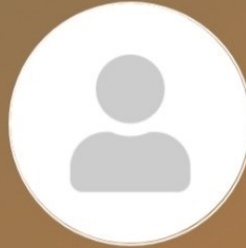
Kelly Ihejiawu, MA

Children's Medical Center Dallas



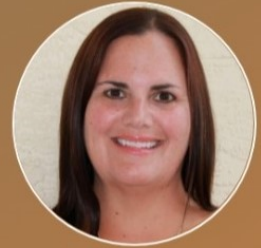
Mason Hines

Mediator in RESOLVE's Washington, D.C



Michelle Kelley, EdD

University of Central Florida



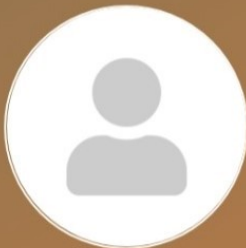
Nicole Martinez

Guidance Counselor, Florida



Michelle Harvey

Children's Medical Center Dallas



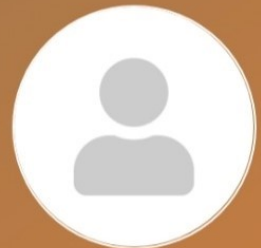
Meaghan Ervin Tishler

Children's National



Patty Dillhoff, MAT

Cincinnati Children's Hospital



**Rebeca Grysko, PhD,
CBIS**

Nemours Children's Hospital, Florida



Rosario Cosme, M.D.

Rush University Medical Center



Sharon Wozny, BS, MEd

Children's Cancer Network



Susan Fail

Principal, North Carolina



Suzanne Seungyoon Lee



Anthony Villaseñor